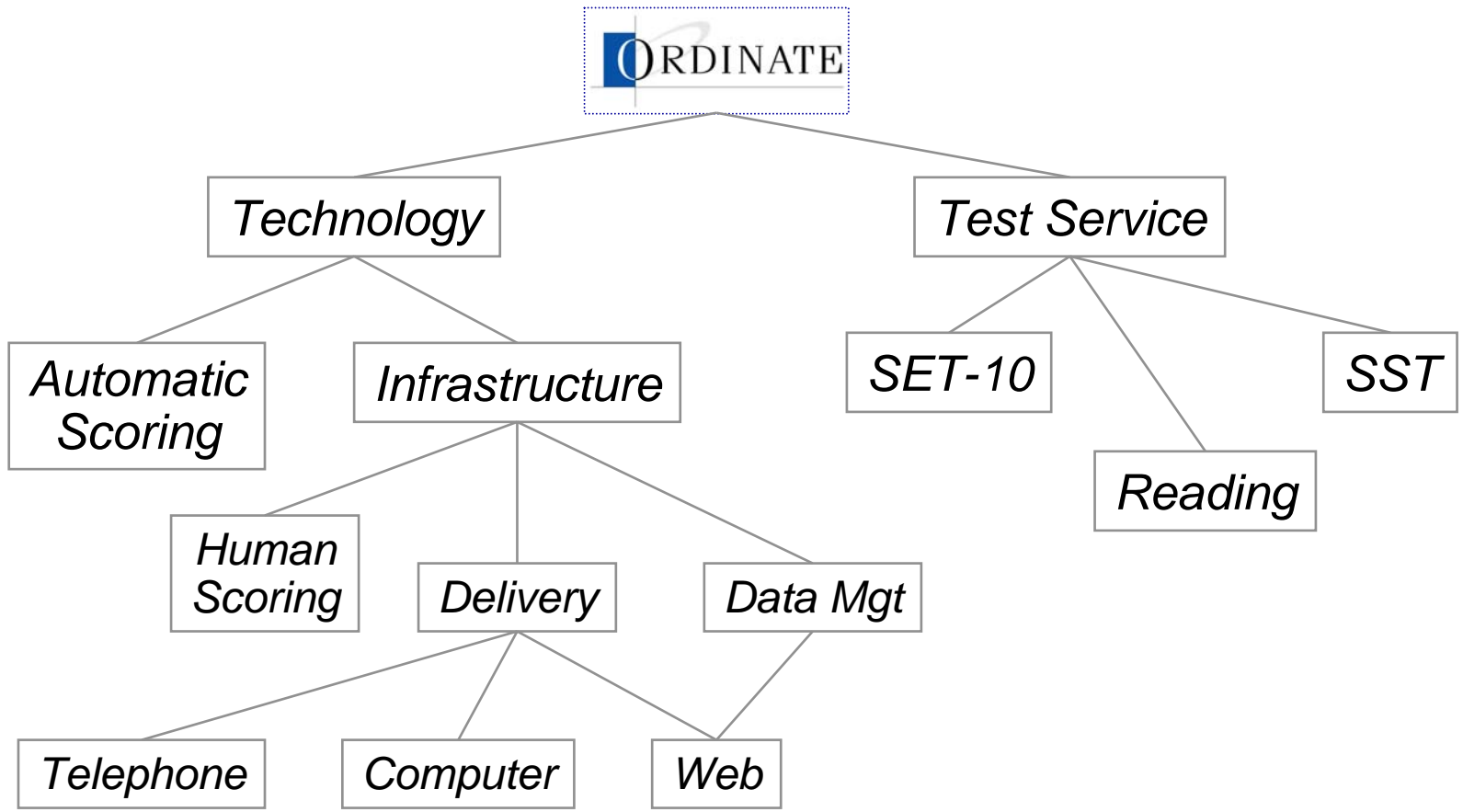


# **Spoken Language Testing: Ordinate's SET-10**

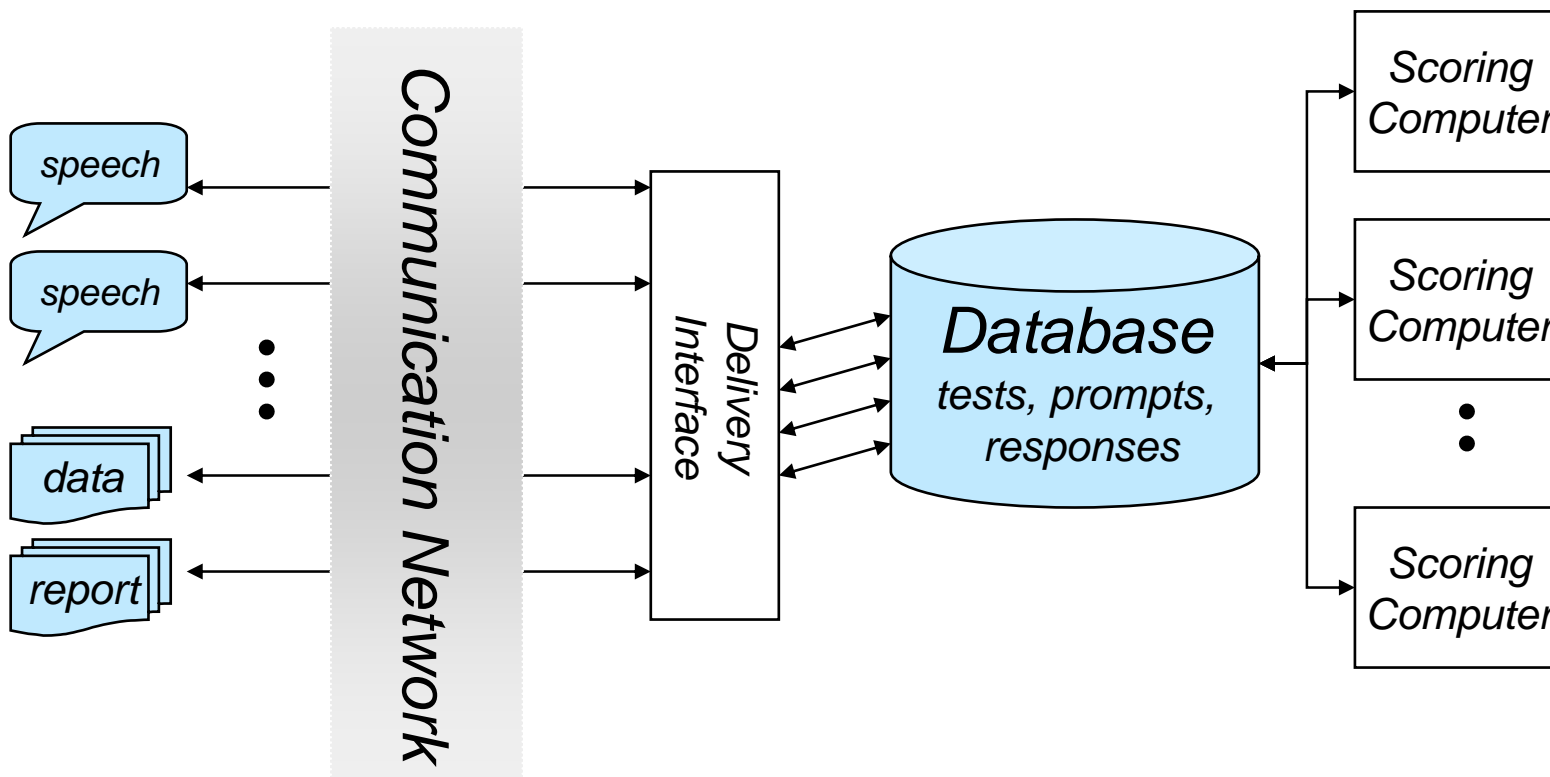
***TESOL 2004, Long Beach***

*Jared Bernstein*  
**Ordinate Corporation**  
**Menlo Park, California**

# Ordinate Technology & Services



# Testing Service System



# Spoken English Tests

**SET-10:** An efficient, reliable ESL proficiency test that measures listening and speaking performance in integrated tasks.

**Junior SET (I, II):** SET forms for early learners, with more graphic support and spoken instructions in the local language.

**SST:** Spoken Spanish Test (*others on the way*)

# SET Tests

**Construct:** *facility in spoken English* – the ability to understand spoken English and speak appropriately in response at a native-like pace on everyday topics.

**Benefits:**

Simple administration at any location

Fair, accurate scores

More reliable (consistent) than human judgment

Relevant to practical language use

Precision for formative progress tracking

# Test Format:

Test number (PIN)


**Part A: reading            8 items**

**Part B: repeat Ss        16 items**

**Part C: short Qs        24 items**

**Part D: build Ss        10 items**

**Part E: open Qs        3 items**

	<b>PhonePass<sup>®</sup></b>	
<b>Call: 1-800-444-7277</b>	<table border="1"> <tr> <td style="padding: 2px;"> Test Identification Number  <b>8607 2171</b> </td> </tr> </table>	Test Identification Number <b>8607 2171</b>
Test Identification Number <b>8607 2171</b>		
<p><b>Introduction:</b>  <i>Thank you for calling Ordinate's PhonePass system.  Please enter your Test Identification Number on the telephone keypad.  Now, please say your name.  Now, please follow the instructions for Parts A through E.</i></p>		
<p><b>Part A: Reading.</b> <i>Please read the sentences as you are instructed.</i></p> <ol style="list-style-type: none"> <li>1. Traffic is a huge problem in Southern California.</li> <li>2. The endless city has no coherent mass transit system.</li> <li>3. Sharing rides was going to be the solution to rush-hour traffic.</li> <li>4. Most people still want to drive their own cars, though.</li> <li>5. Larry's next door neighbors are awful.</li> <li>6. They play loud music all night when he's trying to sleep.</li> <li>7. If he tells them to stop, they just turn it up louder.</li> <li>8. He wants to move out of that neighborhood.</li> <li>9. My aunt recently rescued a dog that was sick.</li> <li>10. She brought her home and named her Margaret.</li> <li>11. They weren't sure she was going to live, but now she's healthy.</li> <li>12. I just wish she could get along better with their cat.</li> </ol>		
<p><b>Part B: Repeat.</b> <i>Please repeat each sentence that you hear.</i>  Example: a voice says, "Leave town on the next train."  and you say, "Leave town on the next train."</p>		
<p><b>Part C: Questions.</b> <i>Now, please just give a simple answer to the questions.</i>  Example: a voice says, "Would you get water from a bottle or a newspaper?"  and you say, "a bottle" or "from a bottle".</p>		
<p><b>Part D: Sentence Builds.</b> <i>Now, please rearrange the word groups into a sentence.</i>  Example: a voice says, "was reading" ... "my mother" ... "her favorite magazine"  and you say, "My mother was reading her favorite magazine."</p>		
<p><b>Part E: Open Questions.</b> <i>You will have 20 seconds to answer each of three questions. The questions will be about family life or personal choices. You will hear each question twice. When you hear a beep, you will have 20 seconds to answer the question. At the end of the 20 seconds, another beep will signal the end of the time you have to answer.</i></p>		
<p><b>Expires: 2003/3/20</b></p> <p style="text-align: right; font-size: small;">SET - 44 - 4648 - 1</p>		

# Core Technologies

## Computational Linguistics

base materials/scoring on actual language usage

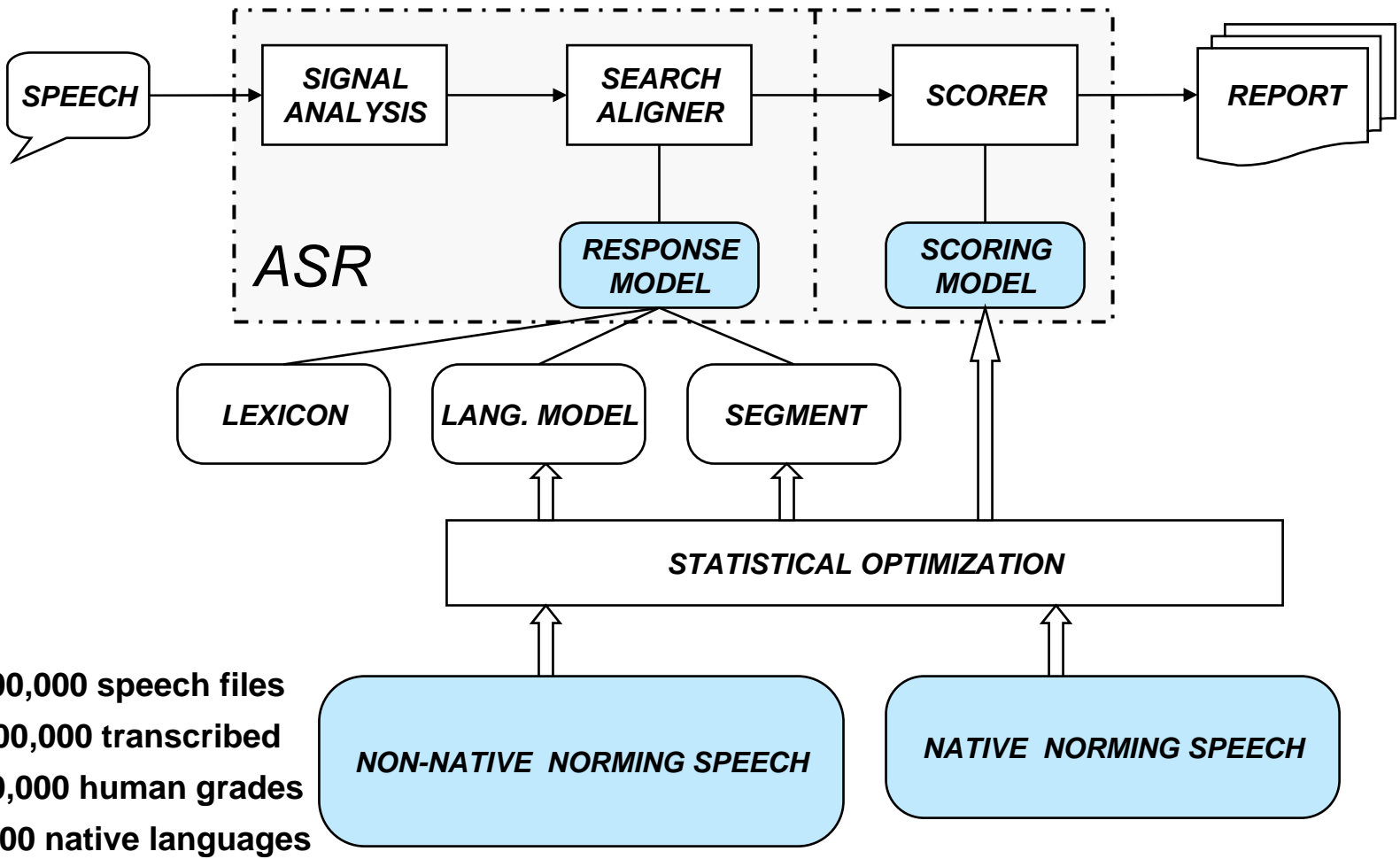
## Speech Recognition

measure what people say, and how they say it  
recognition optimized for special populations

## Psychological Measurement

careful validation assures reliability and fairness

# Augmented Recognition Design



4,000,000 speech files  
 500,000 transcribed  
 250,000 human grades  
 > 100 native languages

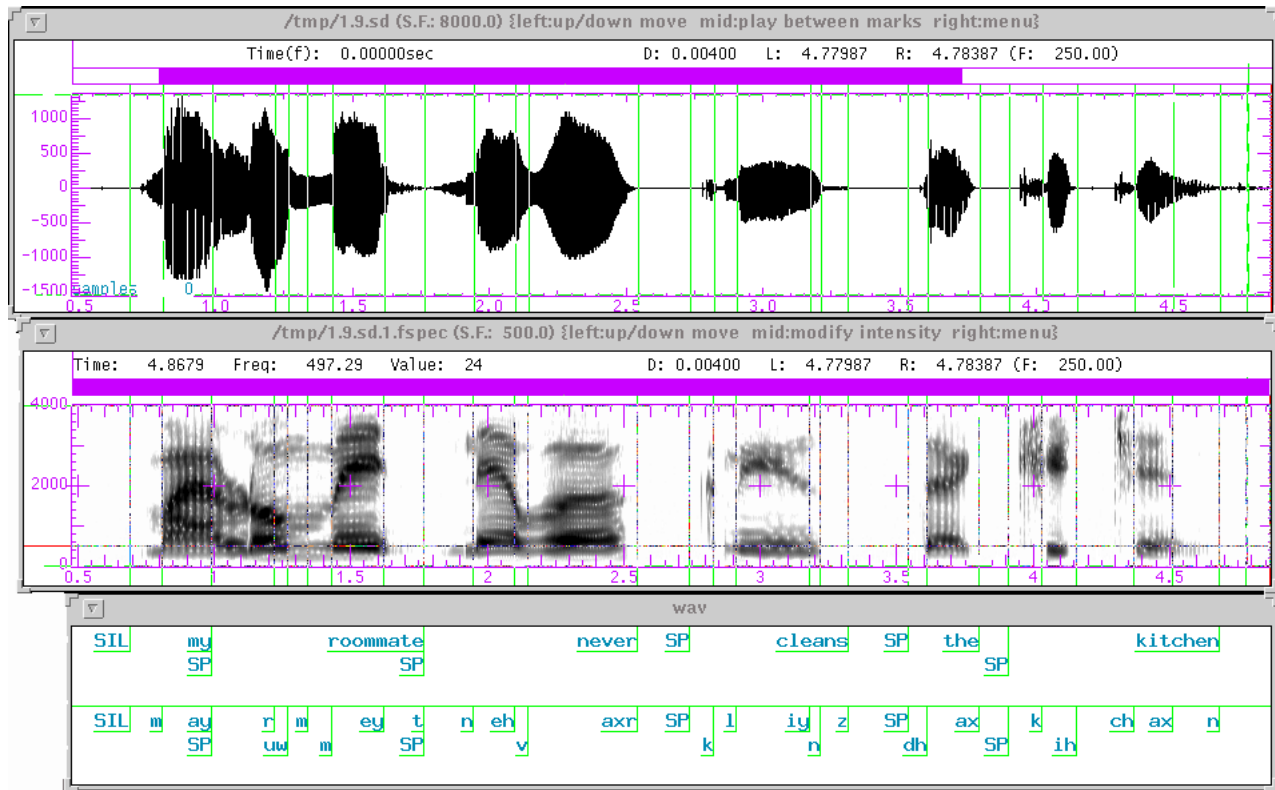


# Phoneme & Word Alignment

w1
w2
w3
w4
w5
w6
*75-90 Words/Min*

---

p p pppp p
p p p p
pp ppp
pp
p p p p p
*5.8 Phones/Sec*



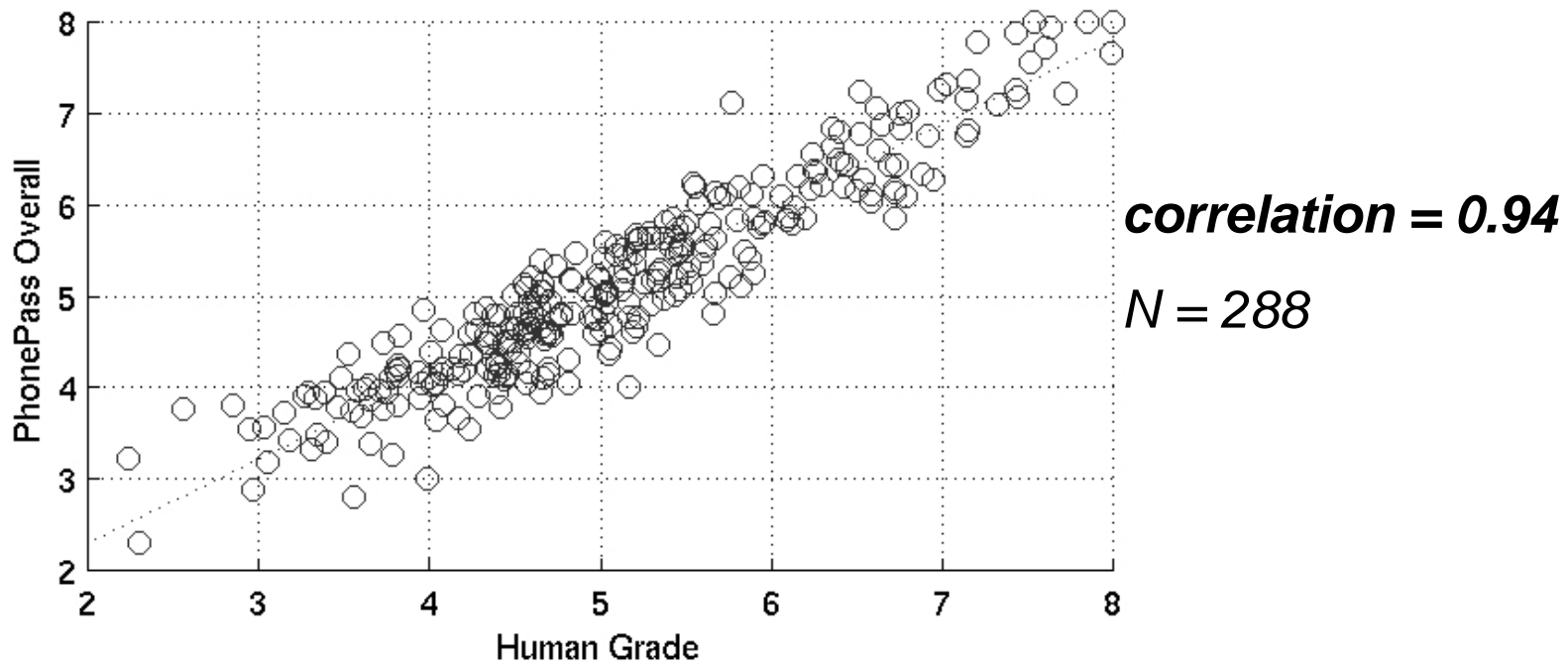
waveform

spectrum

words

segmentation

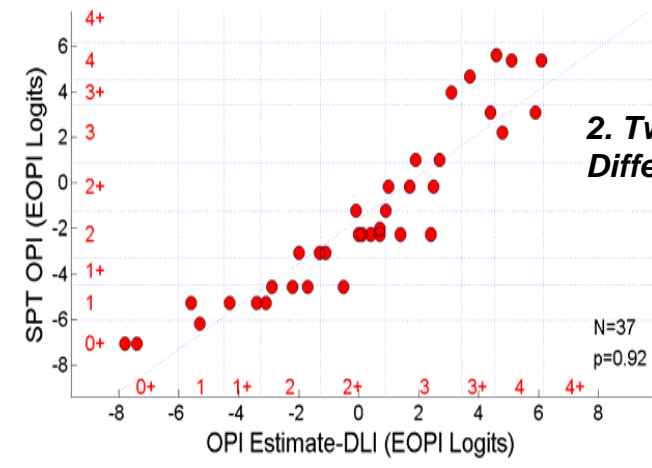
# Machine-Human Comparison



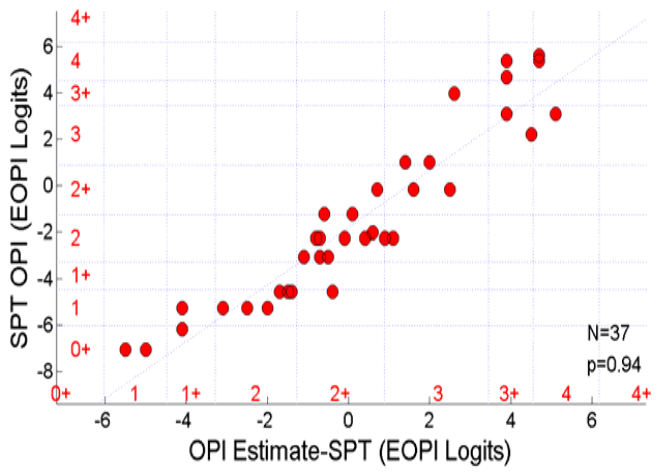
Data from testing at US universities and companies in Europe, Asia, and Latin America.

# SST ~ SPT Interview

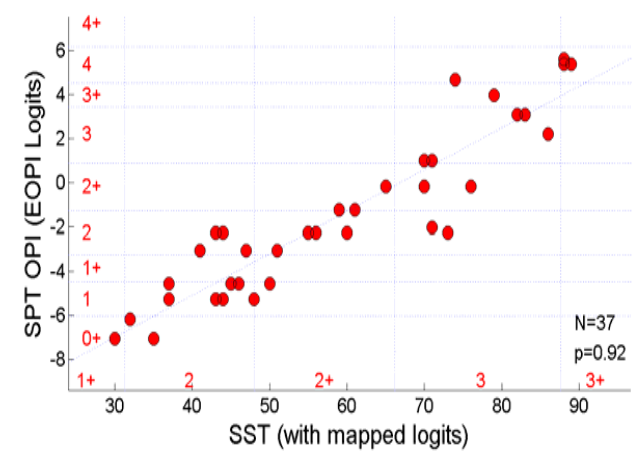
1. SPT Interview ~ SPT ILR Estimate
2. SPT Interview ~ DLI ILR Estimate
3. SPT Interview ~ Machine score



**2. Two Rater Pairs  
Different Material**

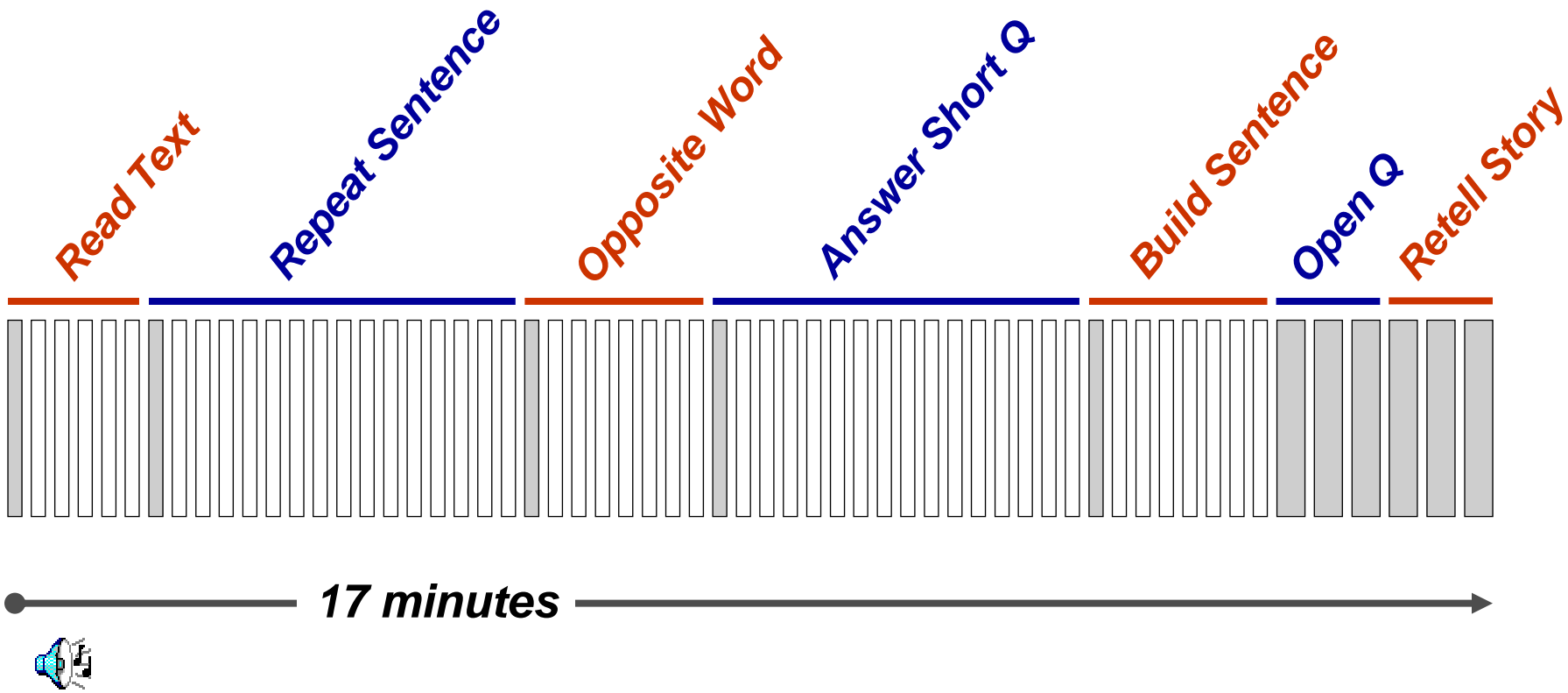


**1. Same Raters  
Different Material**



**3. Machine ~ Two Raters  
Different Material**

# SST: 60-Item Sequence



# Summary & Invitation

Automatic spoken language testing advantages:  
narrow construct and valid inference,  
cost, operational reliability, convenience.

Available now in English (for adults & children),  
in development for Spanish, Japanese, ...

Invitation: Ordinate supports research projects  
in several areas – let's test the tests.